



**UHSAA/Mountain America  
4A Boys' and Girls' Basketball  
Feb. 23 - Feb. 25  
Logan, Utah**



**On behalf of the UHSAA and Utah State University, welcome to Logan for the Mountain America 4A State Boys' and Girls' Basketball Championships. Please read the following instructions for information on the tournament.**

**Team Entry**

Teams may enter through the southwest corner at the tunnel of the Spectrum. Teams will be wrist banded each day and they must enter through that tunnel throughout the tournament. A travel party of 25 (players, coaches, trainers, etc.) will receive complimentary admission as per UHSAA policy. A total number will be kept, and your school will receive an invoice for the difference. Buses are not permitted in the West Spectrum parking lot, please reference maps below for drop off and parking.

Please instruct your team as they come through the entrance to keep all equipment and belongings with them until it is time to use the locker room. Do not take items to the locker room then go into the arena to watch a game.

**Locker Room Policy**

Please instruct your team that as they come through the tunnel, keep all equipment and belongings with them until it is time to use the locker room. Teams will be notified when they are able to use dressing rooms. Dressing rooms will be secure during games, but it is recommended that valuables are locked up. After the game, please immediately remove all belongings and leave the locker room as quickly as possible, as another team will need to enter.

Utah State attendants will work to assign teams to their appropriate locker rooms as you enter the facility. Teams will enter the facility in the south tunnel.

**Ticketing**

Tickets will be available only through GoFan digital tickets. There will be no opportunities for cash purchases of tickets; all tickets must either be purchased on-site using credit or debit card at the box office or purchased in advance via the GoFan website or app. Fans will receive a wristband on entry into the venue to allow for re-entry. Tickets are available at [gofan.co/uhsaa](http://gofan.co/uhsaa).

UHSAA annual passes and silver passes may be redeemed for tickets at the box office. **NOTE:** UHSAA Credentials for certified coaches cannot be used in lieu of the Annual Pass for complimentary admissions.

### Fan Entry

Fans should plan on entering through the West doors of the Spectrum only, located by the ticket office. Utah State University utilizes a clear-bag policy inside the Spectrum. Fans must have a clear bag to enter the facility.

Prohibited Items include: Non-service animals, drones or remote arial cameras, balls, glass or metal containers, knives, fireworks, noisemakers, laser pointers, outside food or drink, strollers, professional cameras (any camera with a removable lens), monopods, bipods, tripods, and video cameras without consent of Media Relations and any other items USU Event Services Staff deems inappropriate or a safety hazard or listed on the UHSAA website.



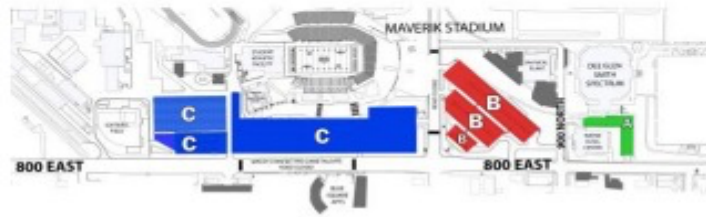
### Athletic Training

Trainers will be available for taping and therapy, but you must provide your own training supplies. The Utah State Trainer's Room will also be open.

### Parking

Buses and fans are advised to park in assigned sections. Please reference the attached maps below.

# HIGH SCHOOL BASKETBALL PARKING MAP



Your team bus may drop off and pickup on the north side of the Spectrum (900 North) in the bus pullout area. Once you drop off, buses must park just south of the softball field, in the northwest parking lot of Maverik Stadium (Lot C) or the Stan Laub Training Center parking lot. Buses are not permitted in the West Spectrum parking lot at any time to prevent high centering upon entry. If you have any other vehicles and/or support vehicles they can park in the terraced lot north of the Spectrum (Lot B). Parking will be on a space available basis. Please refer to the parking map. Lot A is monitored by USU Parking and accessible only to permit holders.

Drop off for individuals with disabilities take place in the parking lot west of the spectrum. This lot is a pass only lot so drivers will need to park in another lot once drop off has happened.

## Arena Sections

Utah State has worked to assign various sections in the arena to facilitate successful entry into the venue at game time. The following sections in the arena will be for the following groups: Section M (Home students), Section L (Buffer, not to be used), Section K (Visitor students), Section Q (Home band), Section G (Visitor band), Section S (Home cheer), Section C (Visiting cheer).

Fans and band members are not permitted on the arena floor.

Band members should enter through the north entrance and proceed to their appropriate section. There is no storage space for instrument cases.

## Game Operations Reminders

The home team for each game will be seated to the right of the scoring table below Section X, while the visiting team will be seated to the left of the scoring table below Section B. Scorers will be seated next to their respective bench at the official table. (No hats or cheering are allowed at the scoring table).

## Cheer/Dance Protocol

Cheerleaders and dance teams will be allowed entry in a matter that is consistent with other UHSAA events, meaning they will pay, and cheerleaders are allowed to be reimbursed according to UHSAA

policy. Halftime performances will start with the home team, followed by the visitor. Teams will need to provide music to the scoring table before the game starts, to ensure it works properly for halftime. Music will need to be taken to the score table, where there will be a smart phone hookup. iPhones are preferred for music.

Teams are encouraged to arrive at the venue ready to perform, although Utah State will work to provide changing rooms for teams. The changing rooms will be available inside the team tunnels.

There is a maximum of 8 cheerleaders that will be allowed on the floor during the event at one time, per team.

### **Warm-Up Time**

There will be a minimum of a 10-minute warm-up period between games. Floors will be swept at halftime of games to allow for continuous game play.

### **Protocol Meeting**

There will be a protocol meeting held for teams who qualify for the championship games. The UHSAA will inform teams of the location and time of each meeting.

## Utah State University Contact Information

*USU Event Services Associate Director of Venue Operations*

Brandon Hansen 435.797.1104

*USU Event Services Coordinator*

Yocia Abney 435.797.1597

*USU Guest Services Coordinator*

Erich Olschewski 435.797.2883

## Emergency Phone Contacts

Fire and Medical Emergency 911  
Police 911

Logan Police (non-emergency) 435.716.9300

USU Police (non-emergency) 435.797.1939

Logan Fire Department 435.716.9500

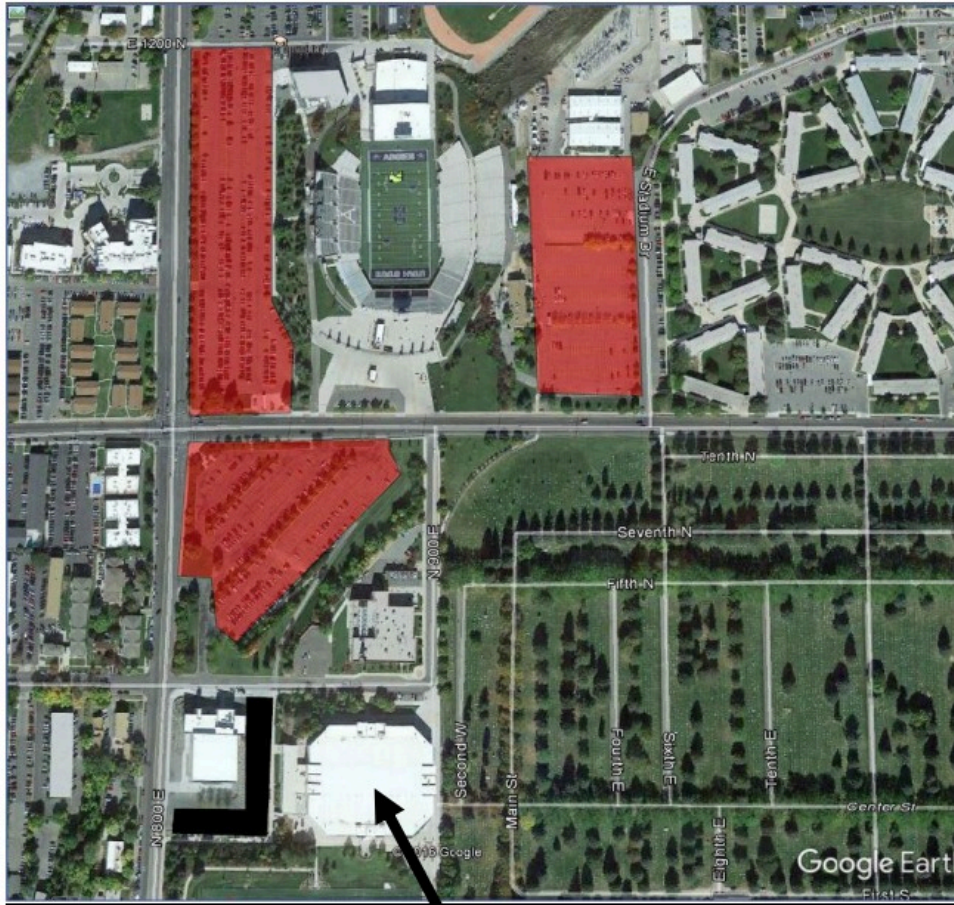
Logan Regional Hospital 435.716.1000  
500 E 1400 N

Cache Valley Specialty Hospital 435.713.9700

2380 N 400 E, North Logan

24-Hour Emergency Care 435.713.9600

## Event Parking Map For Fans



**Dee Glen Smith Spectrum**

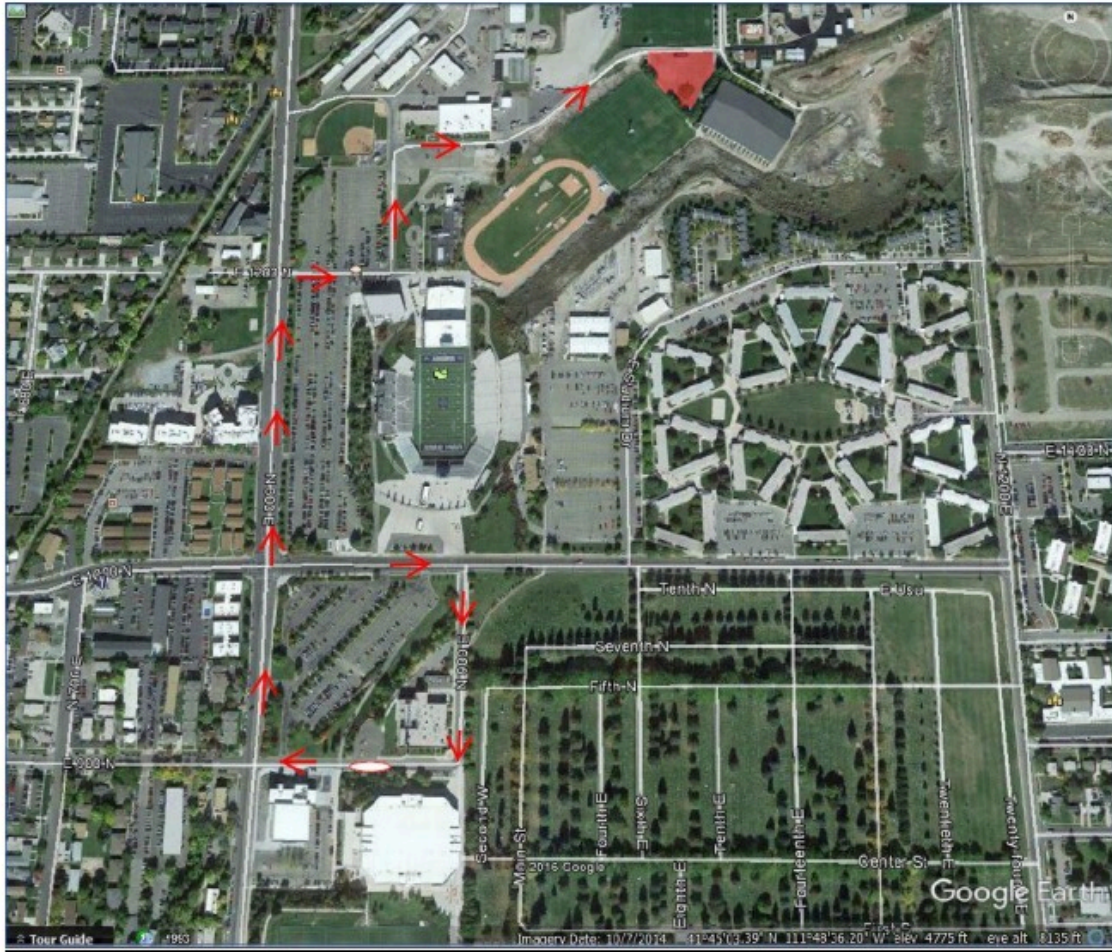
---

## Bus Unloading Map



Please access this road by turning off of 1000 North and on to 900 East.

# Bus Parking Location During Event

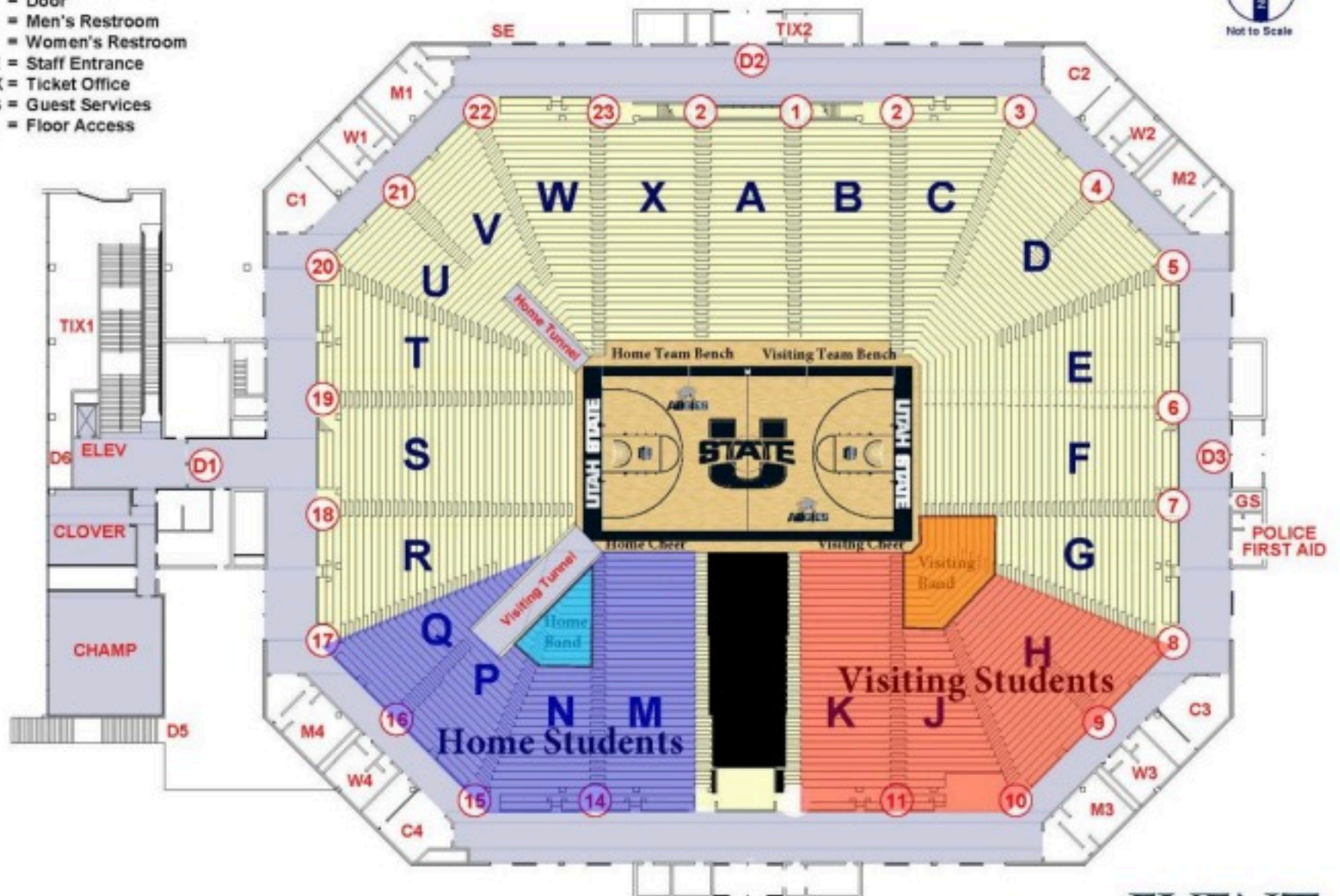




# Spectrum Seating Map

**Key:**

- C = Concessions
- D = Door
- M = Men's Restroom
- W = Women's Restroom
- SE = Staff Entrance
- TIX = Ticket Office
- GS = Guest Services
- FA = Floor Access



**Dee Glen Smith Spectrum**

**EVENT SERVICES**  
UtahStateUniversity.